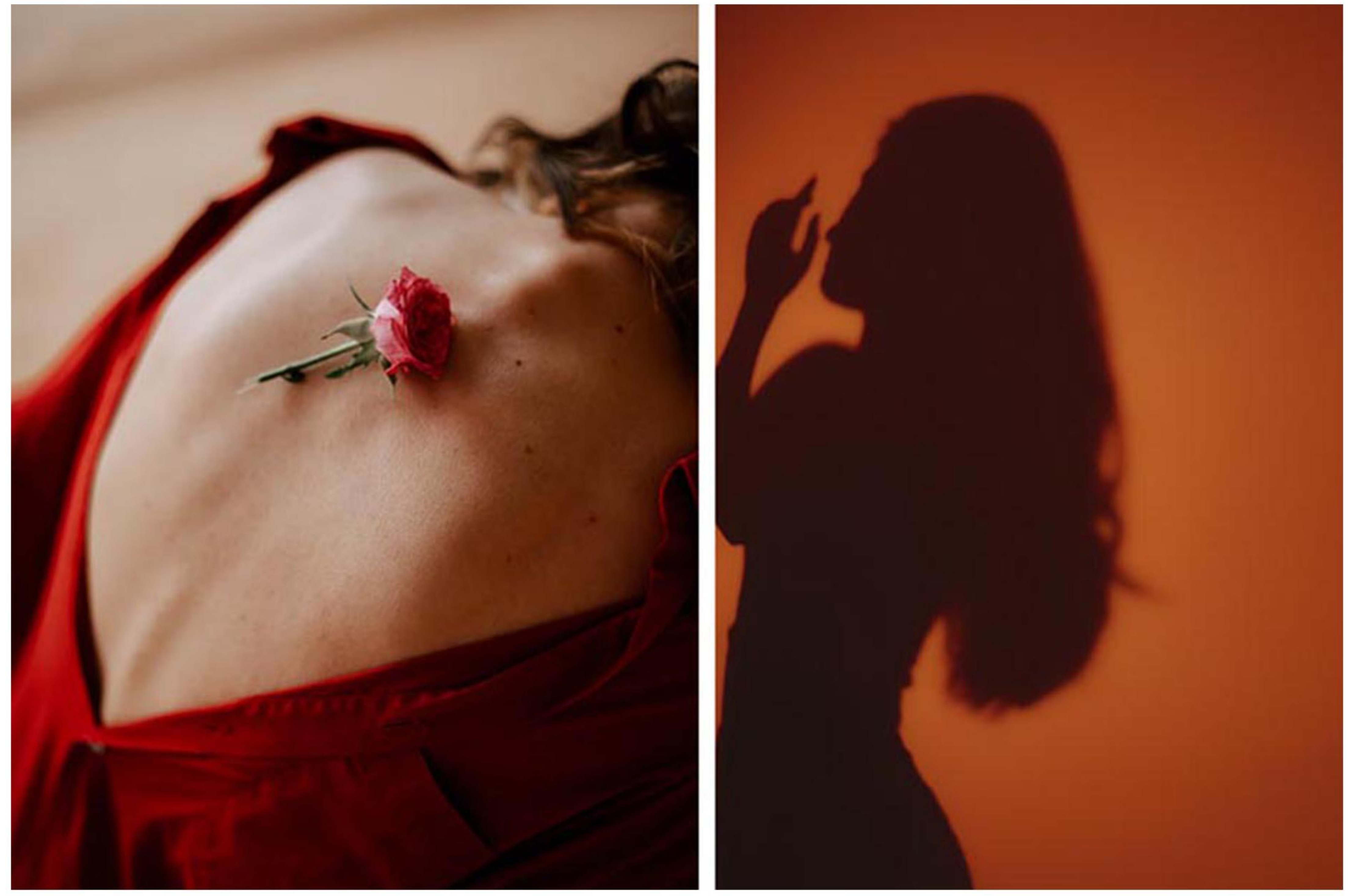


# IMPRINTING

Extrusion/Solid Monocolor

It seems likely that imprinting is an extreme case of conditioning



2023 imprinting



# IMPRINTING



# IMPRINTING

Extrusion/Solid Monocolor

PRODUCT CODE

Front	Temple
PS10536	PS10536
PT10046	PT10046
PS10538	PS10538
PS10535	PS10535
PS10546	PS10546
PS10056S	PS10056S

<b>Thickness</b> 6.0mm(6.0-6.2mm)	<b>Thickness</b> 4.0mm(4.0-4.2mm)
<b>Standard size</b> 6.0mm(6.0-6.2mm)	<b>Standard size</b> 4.0mm(4.0-4.2mm)
<b>Tolerance</b> 6.0mm(6.0-6.2mm) 6.0mm(6.0-6.2mm)	<b>Tolerance</b> 4.0mm(4.0-4.2mm) 4.0mm(4.0-4.2mm)

